



15 February 2024

**HON. CONSUELO N. PADILLA**  
 Chairperson

**HON. ROY C. OSCILLADA**  
 OIC/Executive Director (ED)

**LANDBANK COUNTRYSIDE DEVELOPMENT FOUNDATION, INC. (LCDFI)**  
 26F Landbank Plaza, M. H. Del Pilar cor. Dr. Quintos St.  
 Malate, Manila 1598

**RE: TRANSMITTAL OF 2024 PERFORMANCE SCORECARD**

Dear Chairperson Padilla and ED Oscillada,

This is to formally transmit the 2024 Charter Statement and Strategy Map (**Annex A**) and 2024 Performance Scorecard (**Annex B**) of LCDFI. The same is to be posted in LCDFI's website, in accordance with Section 43 of GCG Memorandum Circular (M.C.) No. 2012-07.<sup>1</sup>

The LCDFI-proposed Strategy Map and Performance Scorecard submitted through its letters dated 30 November 2023<sup>2</sup> were **RETAINED** based on the discussions made during the Technical Panel Meeting (TPM) held on 15 December 2023, evaluation of revised documents submitted through letters dated 15 January 2024,<sup>3</sup> and finalized during the Performance Target Conference (PTC) held on 15 February 2024.

We remind LCDFI that Item 6 of GCG M.C. No. 2023-01<sup>4</sup> requires GOCCs to submit its Quarterly Targets within 15 calendar days from receipt of the GCG-approved Performance Scorecard. Moreover, Item 7 of the same Circular directs GOCCs to accomplish the requisite Quarterly Monitoring Reports detailing its progress in accomplishing its performance targets. The Quarterly Monitoring Reports should disclose substantial changes in circumstances that were unforeseen during the TPM that may affect the timely achievement of targets.

**FOR LCDFI'S INFORMATION AND COMPLIANCE.**

Very truly yours,

  
**ATTY. MARIUS P. CORPUS**  
 Chairperson

  
**ATTY. BRIAN KEITH F. HOSAKA**  
 Commissioner

  
**ATTY. GERALDINE MARIE B. BERBERABE-MARTINEZ**  
 Commissioner

<sup>1</sup> CODE OF CORPORATE GOVERNANCE FOR GOCCs, dated 28 November 2012.  
<sup>2</sup> Officially received by the Governance Commission on 1 December 2023.  
<sup>3</sup> Officially received by the Governance Commission on 15 January 2023.  
<sup>4</sup> PERFORMANCE EVALUATION SYSTEM (PES) FOR THE GOCC SECTOR, dated 19 January 2023.







**VISION:** By 2028, LCDFI will continue to be the primary partner of LANDBANK in the delivery of innovative capacity-building services to strengthen organizations of small farmers and fishers and assist them in their development.

**MISSION:**

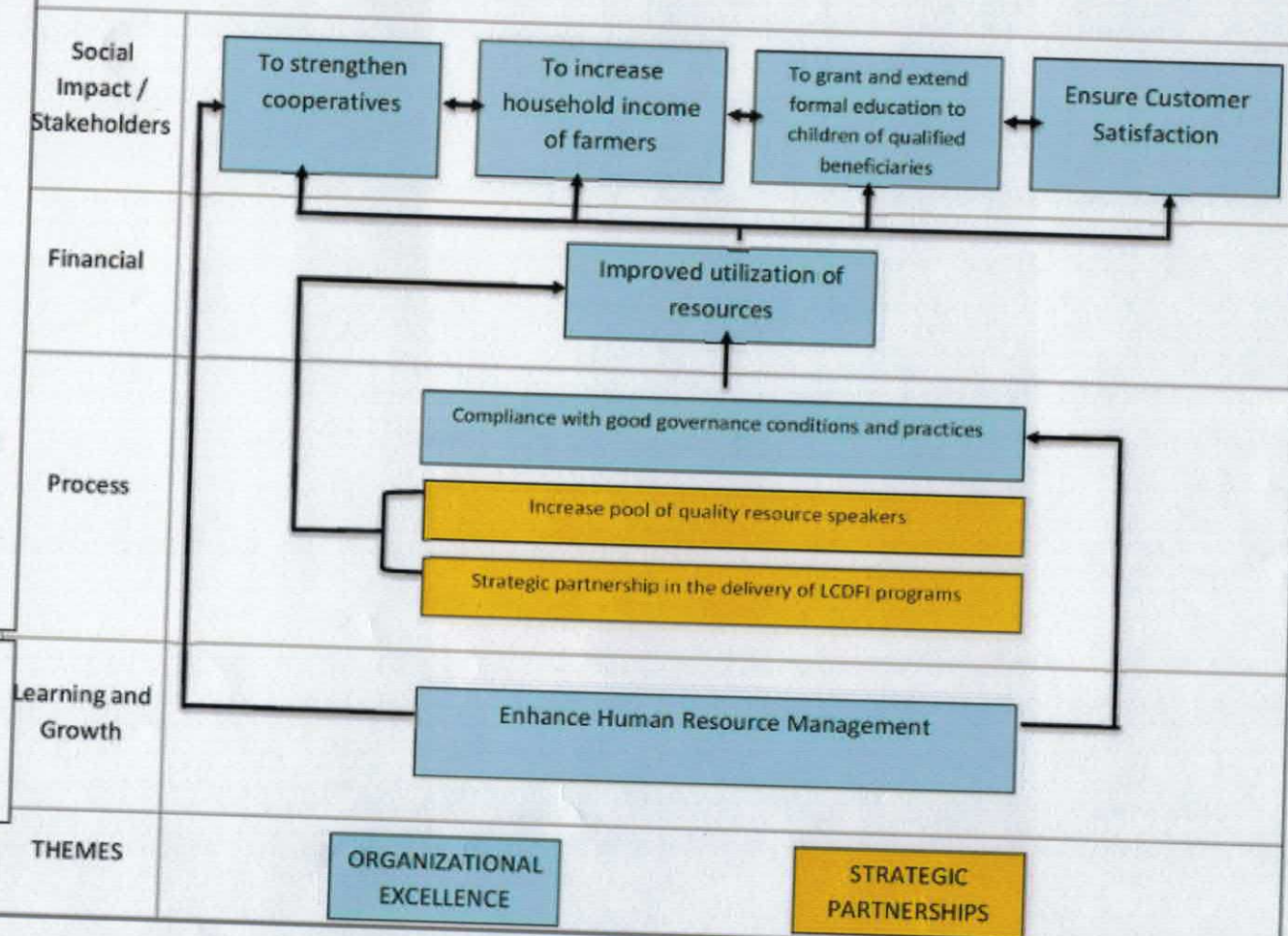
**To our Beneficiaries:** We will deliver responsive capacity-building services to our beneficiaries while promoting sustainable development.

**To our Donors:** We will deliver quality program services through effective and efficient use of resources.

**To our Employees:** We will develop and nurture talents that will exemplify the highest standard of ethics and excellence.

**CORE VALUES:**

- Social Responsibility
- Trust
- Excellence
- Professionalism



*Armando H. Padilla*

*AMC*



**LANDBANK  
COUNTRYSIDE DEVELOPMENT FOUNDATION, INC. (LCDFI)**

**2024 PERFORMANCE SCORECARD**

SOCIAL IMPACT/SS/STAKEHOLDERS	Component				Baseline		Target	
	Objective/Measure	Formula	Weight	Rating System	2021	2022	2023	2024
	SO 1	To Strengthen Cooperatives						
SM 1	Cooperatives Weaknesses Addressed							
	a. Cooperatives with Improved CORE Rating	Actual Accomplishment	5%	(Actual/Target) x Weight	N/A	N/A	One (1) Cooperative with Improved CORE Rating (Cooperatives rated as Poor or Fair using the CORE Instrument)	Two (2) Cooperatives with Improved CORE Rating from Poor or Fair
	b. Number of Cooperative Operations Review and Evaluation (COREs) conducted on LCDFI-Trained Borrowing Cooperatives (TBCs)	Actual Accomplishment	10%	(Actual/Target) x Weight	Conduct of LCDFIs CORE to eight (8) Cooperatives (Maturity Level C & D)	Four (4) Cooperatives (Maturity Level C & D)	Conduct of LCDFIs CORE to eight (8) Cooperatives (Maturity Level C & D)	Twelve (12) cooperatives with Maturity Level C & D
SM 2	Number of Trainings conducted for LBP Borrowing Cooperatives (LBC-BCs)	Actual number of training batches conducted for LBP-BCs	15%	(Actual/Target) x Weight	N/A	46 batches	64 batches	80 batches

*Concepcion M. Padilla*

*[Signature]*



Component					Baseline		Target	
Objective/Measure	Formula	Weight	Rating System	2021	2022	2023	2024	
<b>SO 2</b>	<b>To Increase Household Income of Farmers</b>							
SM 3	Number of farmers-group assisted under Financial Literacy Program (FLP)	Actual number of individual farmers trained	10%	(Actual/Target) x Weight	76,045 FLP training participants	111,851 FLP training participants	77,000 training participants	90,000 training participants
		Actual number of farmers-group assisted	5%	(Actual/Target) x Weight	N/A	4 farmers-group	23 farmers-group	60 farmers group
<b>SO 3</b>	<b>To grant and extend formal education to children of qualified beneficiaries</b>							
SM 4	Number of scholars onboarded for the ISKolar ng Landbank Program	Actual number of scholars onboarded	15%	(Actual/Target) x Weight	N/A	N/A	60 scholars	60 new scholars
<b>SO 4</b>	<b>Ensure Customer Satisfaction</b>							
SM 5	Percentage of Satisfied Customers	Number of respondents who rated at least satisfactory over Total number of survey respondents	5%	(Actual/Target) x Weight <i>If less than 80% =0</i>	0%	0%	90%	90%
		<b>Sub-total</b>	<b>65%</b>					


*Armando M. Padilla*






		Component				Baseline		Target	
		Objective/Measure	Formula	Weight	Rating System	2021	2022	2023	2024
FINANCIAL	SO 5	Improved utilization of resources							
	SM 6	Budget Utilization Report (BUR)	Total amount of disbursements over Total budget for the year (both net of PS cost and DME)	5%	(Actual/Target) x Weight	0%	72.69%	90%	90%
			<b>Sub-total</b>	<b>5%</b>					
INTERNAL PROCESS	SO 6	Compliance with good governance conditions & practices							
	SM 7	Compliance to Quality Standards	Actual Accomplishment	10%	All or Nothing	ISO 9001:2015 Re-certification	Passed Surveillance Audit for ISO 9001:2025 Certification	Surveillance Audit Passed	ISO 9001:2015 Re-certification
	SO 7	Strategic partnerships in delivery of LCDFI programs							
	SM 8	Number of partnerships	Actual number of partnerships	10%	(Actual/Target) x Weight	1 new partner	7 new partners	9 new partners	13 new partners


*Consuelo H. Radilla*



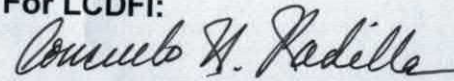



	Component				Baseline		Target		
	Objective/Measure	Formula	Weight	Rating System	2021	2022	2023	2024	
LEARNING & GROWTH	<b>SO 8 Increase pool of quality resource speakers</b>								
	SM 9	Number of resource speakers with Satisfactory Rating	Total number of resource speakers with average satisfactory rating for trainings conducted/ over Total number of speakers with trainings conducted within a year	5%	(Actual/Target) x Weight	100% of RS with Satisfactory Rating	100% of RS with Satisfactory Rating	100% of RS with Satisfactory Rating	100% of RS with Satisfactory Rating
		<b>Sub-total</b>		<b>25%</b>					
LEARNING & GROWTH	<b>SO 9 Enhance Human Resource Management</b>								
	SM 10	Percentage of employees with Required Competencies Met	Incumbents meeting required competencies / Filled plantilla	5%	All or Nothing	Improvement in the Competency Baseline of the Organization	Improvement in the Competency Baseline of the Organization 2022: 208.83%; 2021: 197.32%	Improvement in the Competency Baseline of the Organization	Establishment of Baseline
		<b>Sub-total</b>		<b>5%</b>					
	<b>TOTAL</b>		<b>100%</b>						

For GCG:

  
**ATTY. MARIUS P. CORPUS**  
 Chairperson

For LCDFI:

  
**HON. CONSUELO N. PADILLA**  
 Chairperson

  
**HON. ROY C. OSCILLADA**  
 OIC/Executive Director