



**10 March 2023**

*Julio,  
 for our reference of compliance*  


**MS. CONSUELO N. PADILLA**  
 Chairperson  
**MR. ROY C. OSCILLADA**  
 Officer-in-Charge  
**LANDBANK COUNTRYSIDE DEVELOPMENT  
 FOUNDATION, INC. (LCDFI)**  
 26F Landbank Plaza 1598 M.H. Del Pilar  
 Cor. Dr. Quintos St., Malate, Manila

**RE: TRANSMITTAL OF 2023 CHARTER STATEMENT AND  
STRATEGY MAP AND PERFORMANCE SCORECARD**

Dear Chairperson Padilla and OIC Oscillada,

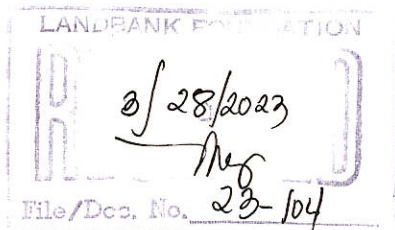
We respectfully furnish you the SIGNED 2023 LCDFI Charter Statement and Strategy Map (**Annex A**) and Performance Scorecard (**Annex B**).

Your compliance with GCG M.C. No. 2012-07 and GCG M.C. No. 2023-01 will be highly appreciated.

Very truly yours,

  
**Justice ALEX L. QUIROZ (ret.)**  
 Chairperson

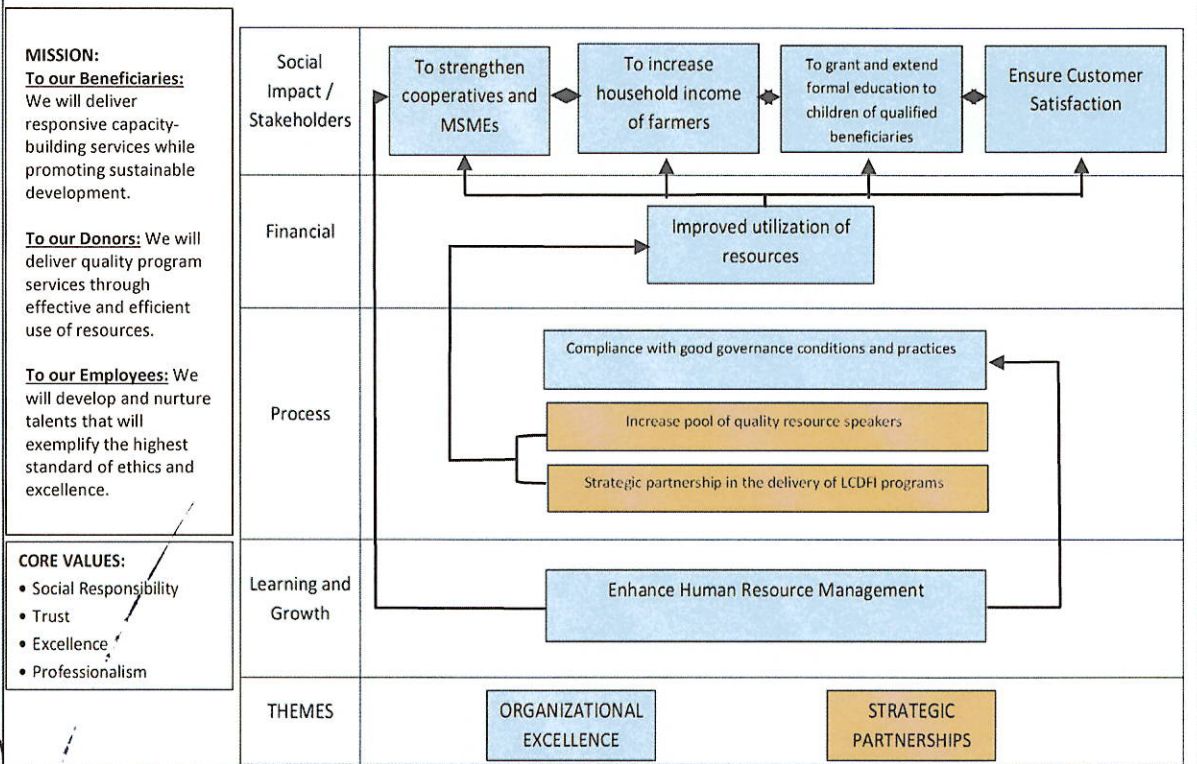
cc: LCDFI Employees' Association/Union



**LANDBANK COUNTRYSIDE DEVELOPMENT FOUNDATION, INC.**  
**(LCDFI)**



**VISION:** By 2025, LCDFI will continue to be the primary partner of LANDBANK in the delivery of innovative capacity-building services to strengthen organizations of small farmers and fishers and assist them in their development.



*[Handwritten signature]*

*[Handwritten signature]*

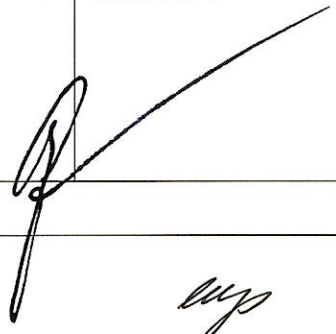
*[Handwritten signature]*

**LANDBANK COUNTRYSIDE DEVELOPMENT FOUNDATION, INC. (LCDFI)  
2023 PERFORMANCE SCORECARD**

Component					Baseline		Targets		
Objective/Measure	Formula	Wt.	Rating System	2020	2021	2022	2023		
<b>SOCIAL IMPACT / STAKEHOLDERS</b>	<b>SO 1</b>	<b>To Strengthen Cooperatives and MSMEs</b>							
	SM 1	Cooperatives Weaknesses Addressed							
		a. Cooperatives with Improved CORE Rating	Actual Accomplishment	5%	Actual over Target	N/A	N/A	N/A	One (1) Cooperative with Improved CORE rating from Poor/Fair
		b. Number of COREs conducted on LCDFI-Trained Borrowing Cooperatives (TBCs)	Actual Accomplishment	5%	Actual over Target	Four (4) cooperatives (Maturity Levels C & D)	N/A	Four (4) cooperatives (Maturity Levels C & D)	Eight (8) cooperatives (Maturity Levels C & D)
	SM 2	Number of Trainings conducted for LBP Borrowing Cooperatives (LBP-BCs)	Actual Number of Training Batches conducted for LBP-BCs	15%	Actual over Target	N/A	N/A	44 batches	64 batches
	SM 3	Number of Trainings conducted for LBP Borrowing Micro, Small and Medium Enterprises (MSMEs)	Actual Number of Training Batches conducted for LBP Borrowing MSMEs	15%	Actual over Target	N/A	N/A	10 batches	15 batches
	<b>SO 2</b>	<b>To Increase the Household Income of Farmers</b>							
SM 4	Number of farmers-group assisted under the Financial Literacy Program (FLP)	Actual number of farmers-group assisted	2.5%	Actual over Target	N/A	N/A	4 farmers-group	23 farmers-group	

Component					Baseline		Targets	
Objective/Measure	Formula	Wt.	Rating System	2020	2021	2022	2023	
	Actual number of individual farmers trained	2.5%	Actual over Target	83,823 participants	76,045 participants	111,851 participants	77,000 participants	
<b>SO 3</b>	<b>To Grant and Extend Formal Education to Children of Qualified Beneficiaries</b>							
SM 5	Number of scholars onboarded for the ISKOlar ng Landbank Program (cumulative)	Actual number of scholars onboarded	15%	Actual over Target	N/A	N/A	N/A	60
<b>SO 4</b>	<b>Ensure Customer Satisfaction</b>							
SM 6	Percentage of Satisfied Customers	$\frac{\text{Number of respondents who rated at least satisfactory}}{\text{Total number of survey respondents}}$	5%	Actual over Target (If less than 80% = 0)	-	-	90%	90%
		<b>Sub-total</b>	<b>65%</b>					

SOCIAL IMPACT / STAKEHOLDERS





Component					Baseline		Targets		
	Objective/Measure	Formula	Wt.	Rating System	2020	2021	2022	2023	
FINANCIAL	SO 5	Improved Utilization of Resources							
	SM 7	Budget Utilization Efficiency	$\frac{\text{Total amount of disbursements}}{\text{Total Board-approved budget for the year (both net of Personnel Services Cost and Direct Manpower Expenses)}}$	5%	Actual over Target	-	-	90%	90%
			<i>Sub-total</i>	5%					
INTERNAL PROCESS	SO 6	Compliance with Good Governance Conditions and Practices							
	SM 8	Establishment of QMS	Actual Accomplishment	10%	All or Nothing	Surveillance Audit Passed	ISO 9001:2015 Recertification	Pass Surveillance Audit for ISO 9001:2015 Certification	Surveillance Audit Passed
	SO 7	Strategic Partnerships in Delivery of LCDFI Programs							
	SM 9	Number of Partnerships Established	Actual Number of Partnerships	5%	Actual over Target	1 new partner	-	1 new partner	9 new partners

Component					Baseline		Targets		
	Objective/Measure	Formula	Wt.	Rating System	2020	2021	2022	2023	
INTERNAL PROCESS	<b>SO 8</b>	<b>Increase Pool of Quality Resource Speakers</b>							
	SM 10	Number of Resource Speakers with Satisfactory Rating	$\frac{\text{Total number of resource speakers with an average satisfactory rating for trainings conducted}}{\text{Total number of speakers with trainings conducted within the year}}$	10%	Actual over Target	100% of Resource Speakers with Satisfactory Rating	-	100% of Resource Speakers with Satisfactory Rating	100% of Resource Speakers with Satisfactory Rating
	<b>Sub-total</b>			<b>25%</b>					
LEARNING AND GROWTH	<b>SO 9</b>	<b>Enhance Human Resource Management</b>							
	SM 11	Improve Competency of the Organization	Actual Accomplishment	5%	All or Nothing	0%	-	Improvement in the Competency Baseline of the Organization	Improvement in the Competency Baseline of the Organization
	<b>Sub-total</b>			<b>5%</b>					
<b>TOTAL</b>			<b>100%</b>						

For GCG:

  
Justice ALEX L. QUIROZ (ret.)  
Chairperson

For LCDFI:

  
Ms. CONSUELO N. PADILLA  
Chairperson

  
Mr. ROY C. OSCILLADA  
OIC Executive Director